

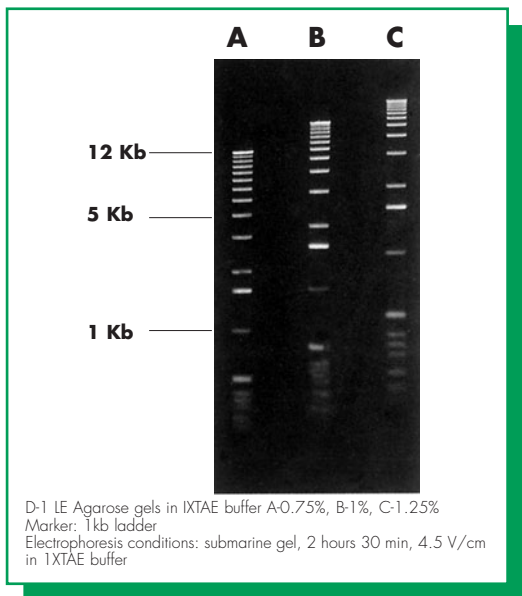


D-1 Agarose

D-1 Agarose is available in 5 types: Low EEO, Medium EEO, High EEO, Special High EEO and Quick Soluble, for different uses.

Features:

- Extraordinary mechanical resistance for more reliable and easier handling.
- Possibility of varying pore size in accordance with particle size by modifying the gel concentration.
- Easy preparation of the gel by simple dilution in aqueous buffers either by standard boiling or microwaving.
- Greater thermal stability due to high hysteresis (difference between gelling and melting temperatures).
- Excellent transparency of the gel & visibility.
- Exceptionally low absorption of staining agents.
- Absence of toxicity (the alternative is polyacrylamide which can be toxic).



Applications:

D-1 LE: with Low EEO. High electrophoresis mobility.

- Nucleic acid analytical and preparative electrophoresis.
- Blotting.
- Protein electrophoresis such as radial immunodiffusion.

D-1 ME: with intermediate EEO.

- Nucleic acids electrophoresis.
- Protein electrophoresis (serum protein and immunoelectrophoresis).

D-1 HE: with high EEO.

- Used in techniques such as serum protein, immunoelectrophoresis and counterimmunoelectrophoresis.

D-1 SHE: with very high EEO.

- For techniques that require high EEO.
- To blend with lower EEO agarose in order to prepare agarose with desired EEO value.

D-1 QS (Quick Soluble): This type of agarose is based on the same superior performance, parameters, applications and functional test as those of agarose D-1 LE. Additional characteristics in this particular type of agarose is the special particle size distribution, providing an easier and faster dissolution step to the final user.

Specifications:

	D-1 LE	D-1 ME	D-1 HE	D-1 SHE
Moisture	≤ 7%	≤ 7%	≤ 7%	≤ 7%
Ash	≤ 4%	≤ 0.5%	≤ 1.0%	≤ 1.5%
EEO	0.05-0.13%	0.16-0.19%	0.23-0.26%	≥ 0.3%
Sulfate	≤ 0.1%	≤ 0.14%	≤ 0.2%	≤ 0.2%
Clarity (NTU)	≤ 4	≤ 4	≤ 4	≤ 4
Gel Strength 1% (g/cm ²)	≥ 1200	≥ 1000	≥ 750	≥ 700
Gel Strength 1.5 % (g/cm ²)	≥ 2500	≥ 2500	≥ 1200	≥ 1100
Gelling Temperature (°C)	36 ± 1.5	36 ± 1.5	36 ± 1.5	36 ± 1.5
Melting Temperature (°C)	88 ± 1.5	88 ± 1.5	88 ± 1.5	88 ± 1.5
DNAse/ RNAse activity	None detected	-	-	-
DNA resolution ≥ 1000 bp	Finely resolved	-	-	-
Gel background	Very low	-	-	-