

## MS-12 Agarose

This molecular screening agarose is designed to have a larger gel network than MS-8 and is recommended for the separation of DNA fragments smaller than 1500 bp.

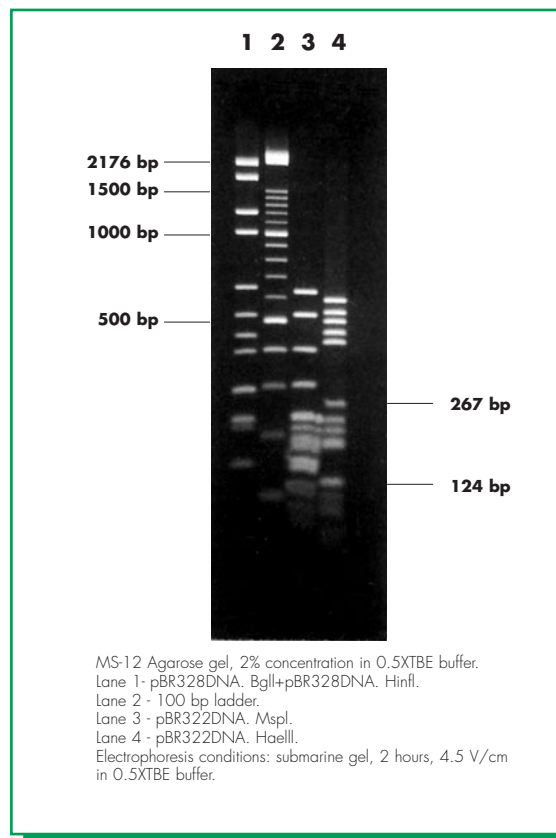
Gels made with MS-12 have higher gel strength than competitive products. The gel is exceptionally firm but still flexible when handled, minimizing the danger of cracking or breaking.

MS-12 has the same melting and gelling temperature as regular agaroses, allowing faster and easier preparation of gels. MS-12 also gives excellent resolution at concentrations of  $\leq 1\%$ .

MS-12 Agarose is recommended for all analytical applications, especially when DNA is recovered for subsequent use in enzymatic procedures.

### Functional Tests:

- DNA resolution: bands appear sharp and finely resolved.
- DNase/RNase activity: none detected.
- Gel background: very low after EtBr staining.
- Blotting: very good transference for DNA fragments 154 – 2176 bp in 4 % gels.
- DNA binding: very low.



### Specifications:

	1.5 %	4 %
Moisture	$\leq 7\%$	
Ash	$\leq 0.35\%$	
EEO	$\leq 0.12\%$	
Sulfate	$\leq 0.11\%$	
Clarity (NTU)	$\leq 5$	
Gel Strength (g/cm <sup>2</sup> )	$\geq 2000$	$\geq 4200$
Gelling Temperature (°C)		$\leq 40.5$
Melting Temperature (°C)		$\leq 93$

### Ranges of separation:

	2 %	500 – 1500 bp
	4 %	150 – 600 bp

These ranges are approximate and have been calculated in 1XTAE buffer.